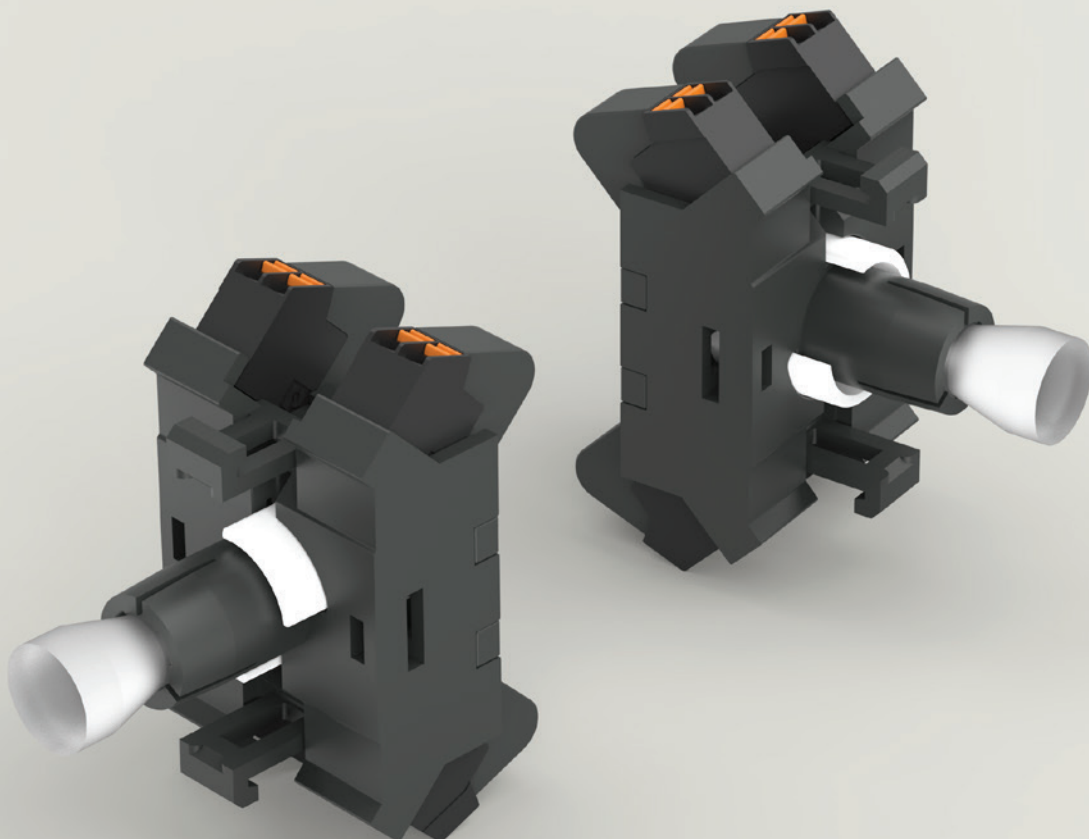


Series

04

Dual LED lamp block.

www.eao.com



Series 04

Dual LED lamp block.

EAO's proven Series 04 includes an innovative lamp block that integrates two LEDs to provide dual, reliable and safe illumination.

Public transportation today needs easy to use, modern actuators and indicators. EAO, the expert partner for Human Machine Interfaces (HMIs), offers with the innovative dual LED lamp block an accessory that is ideal for the challenging conditions often found within all types of rail transportation applications.

This reliable illumination accessory is designed for all Series 04 illuminated devices in order to enhance operating safety in the driver's cab and on the control panel by way of intuitively quick, visual recognition.

The lamp block allows one device to display different states in a unique way. Thanks to the pulsed control of the two inputs for the dual LED display, the user gets quick, positive feedback of proper operation. Or, if one input signal fails (0VDC), the LED display flashes a warning. The pulsed inputs need to be generated by an upstream, external control.

This modern LED technology allows for a long service life and homogenous illumination that is clearly visible – even in strong sunlight and low light conditions.

The dual LED lamp block can be combined with all Series 04 illuminated devices and offers the following benefits:

- Rail standard mounting for new designs or retrofit applications
- Can be combined with all proven Series 04 switching elements
- Support for up to three switching elements (six contacts)
- User-friendly push-in terminal (PIT)

The Series 04 – Versatile, robust and reliable

Thanks to their modern design, safe and ergonomically friendly operation, and pronounced tactile feedback, the Series 04 has become an established feature of driver's cabs in particular. The extensive range of Series 04 products offers square or round options that enable virtually flush front mounting styles.

Each function of the Series 04 can be designed precisely to specification for the given application. For instance, standardised or customised markings can enable intuitive operation – in the form of text or symbol engravings as found on the lens or marking plate.

Front bezels made of black or silver plastic, as well as natural or black anodised aluminium, lend these actuators and indicators a design that is as modern as it is robust.

The switching elements also offer a choice of screw or plug-in terminals as well as tool-less mounting using the intuitive option of push-in terminals (PIT). Combined with international approvals and compliance with relevant standards and directives, Series 04 actuators and indicators cater to all the needs of users.

Advantages.

- Allows one device to display different states
- Dual indication safely signals the failure of one input signal
- Designed for all illuminated devices of the proven Series 04
- Reliable LED technology enables long service life
- Two separate LED's in a single lamp block

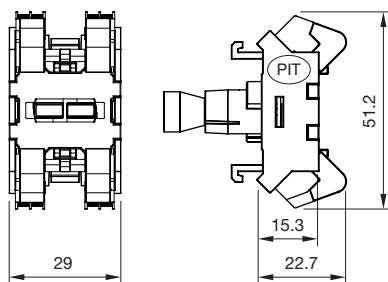
Typical applications

- Driver's cab
- Control units
- Control cabinets

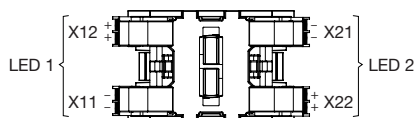
Technical data

- Terminal
Push-in terminal (PIT)
- Standards
 - UL-94 V0
 - EN 45545 (fire protection on railway vehicles)
- LED colour
Two separate controllable inputs:
white/white (other colours on request)
- Material
Plastic
- Colour
Dark grey
- Operating voltage
24VDC or 110VDC (-30% / +25%)
- Operating temperature
-25°C to +60°C

Dimensions



Component layout



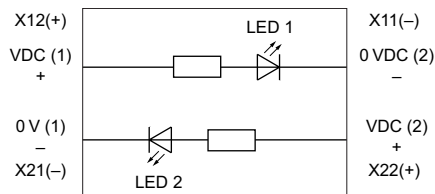
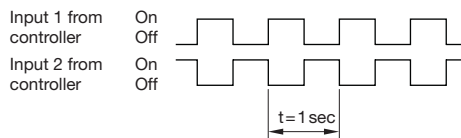
All dimensions in mm.

Application example for safety function

Pulsed control inputs for dual LED display.

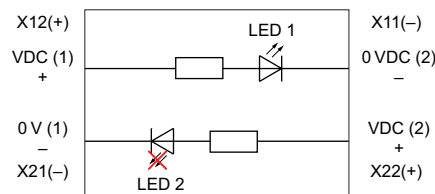
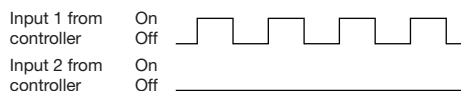
Correct function

When both signal inputs are properly working – both LED's rapidly flash so that illumination appears to be constant.



Warning function

When one input signal fails (0VDC) – only the LED with the input flashes so that illumination appears flashing to the user which indicates an operational error.



Please find additional specifications in the product catalogue.

EAO Contact.

Your centre of excellence.

Headquarters

EAO Holding AG
Tannwaldstrasse 88
CH-4600 Olten
Telephone +41 62 286 92 00
info@eao.com

Manufacturing Companies

Switzerland
EAO AG
Tannwaldstrasse 88
CH-4600 Olten
Telephone +41 62 286 91 11
info@eao.com

EAO Systems AG
Tannwaldstrasse 88
CH-4600 Olten
Telephone +41 62 286 91 11
sales.esy@eao.com

China
EAO (Guangzhou) Ltd.
3/F, Block G4, South China
New Materials Innovation Park
31 Kefeng Road
Guangzhou Science City
CN-Guangzhou, PRC
Telephone +86 20 3229 0390
sales.ecn@eao.com

Germany
EAO Automotive GmbH & Co. KG
Richard-Wagner-Straße 3
DE-08209 Auerbach/Vogtland
Telephone +49 3744 8264 0
sales.esa@eao.com

North America
EAO Corporation
One Parrott Drive
Shelton
US-CT 06484
Telephone +1 203 951 4600
sales.eus@eao.com

Sales Companies

China
EAO (Guangzhou) Ltd.
3/F, Block G4, South China
New Materials Innovation Park
31 Kefeng Road
Guangzhou Science City
CN-Guangzhou, PRC
Telephone +86 20 3229 0390
sales.ecn@eao.com

EAO (Shanghai) Office
Rm. 403, Block 5#
CIFI Century Square, Lane 28
NO. 21, Danba Road
Putuo District
CN-Shanghai, PRC
Telephone +86 21 6095 0717
sales.ecn@eao.com

France
EAO France SAS
5, rue Henri François
FR-77330 Ozoir-la-Ferrière
Telephone +33 1 64 43 37 37
sales.efr@eao.com

**Germany, Austria,
Poland, Czech Republic**
EAO GmbH
Langenberger Straße 570
DE-45277 Essen
Telephone +49 201 8587 0
sales.ede@eao.com

Hong Kong (Asia Pacific)
EAO (Far East) Ltd.
Unit A1, 1/F, Block A
Tin On Industrial Building
777 Cheung Sha Wan Road
Lai Chi Kok, Kln
HK-Hong Kong
Telephone +852 27 86 91 41
sales.ehk@eao.com

Italy
EAO Italia S.r.l.
Centro Direzionale Summit –
Palazzo D1
Via Brescia 28
IT-20063 Cernusco sul Naviglio (MI)
Telephone +39 02 92 471934
sales.eit@eao.com

Japan
EAO Japan Co. Ltd.
Net 1 Mita Bldg. 3F
3-1-4 Mita Minato-ku
JP-Tokyo 108-0073
Telephone +81 3 5444 5411
sales.ejp@eao.com

Netherlands, Belgium
EAO Benelux B.V.
Kamerlingh Onnesweg 46
NL-3316 GL Dordrecht
Telephone +31 78 653 17 00
sales.enl@eao.com

North America
EAO Corporation
One Parrott Drive
Shelton
US-CT 06484
Telephone +1 203 951 4600
sales.eus@eao.com

Switzerland
EAO Schweiz AG
Tannwaldstrasse 86
CH-4600 Olten
Telephone +41 62 286 95 00
sales.ech@eao.com

**United Kingdom, Finland,
Ireland, Norway, Sweden**
EAO Ltd.
Highland House
Albert Drive
Burgess Hill
GB-West Sussex RH15 9TN
Telephone +44 1444 236 000
sales.euk@eao.com